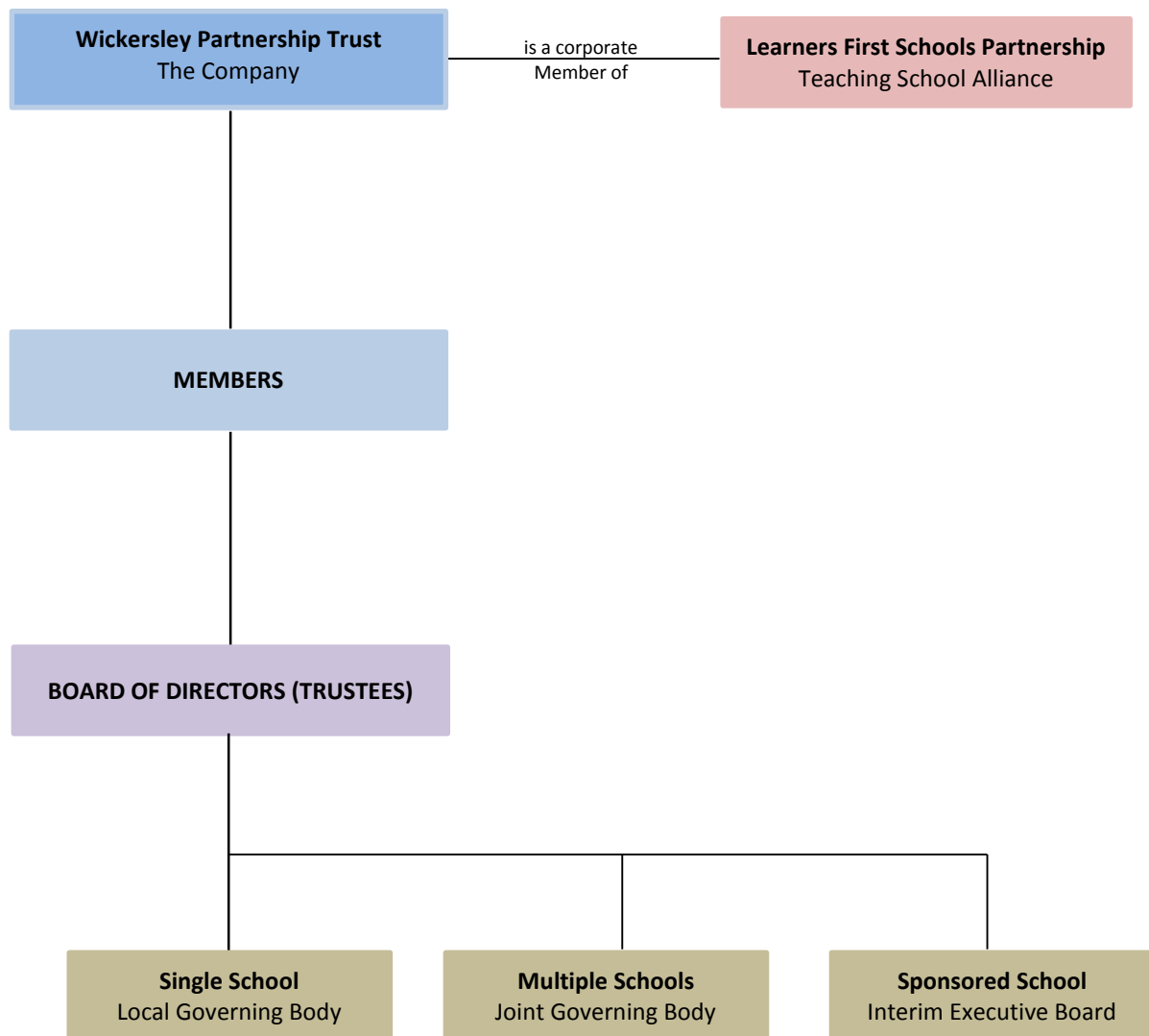


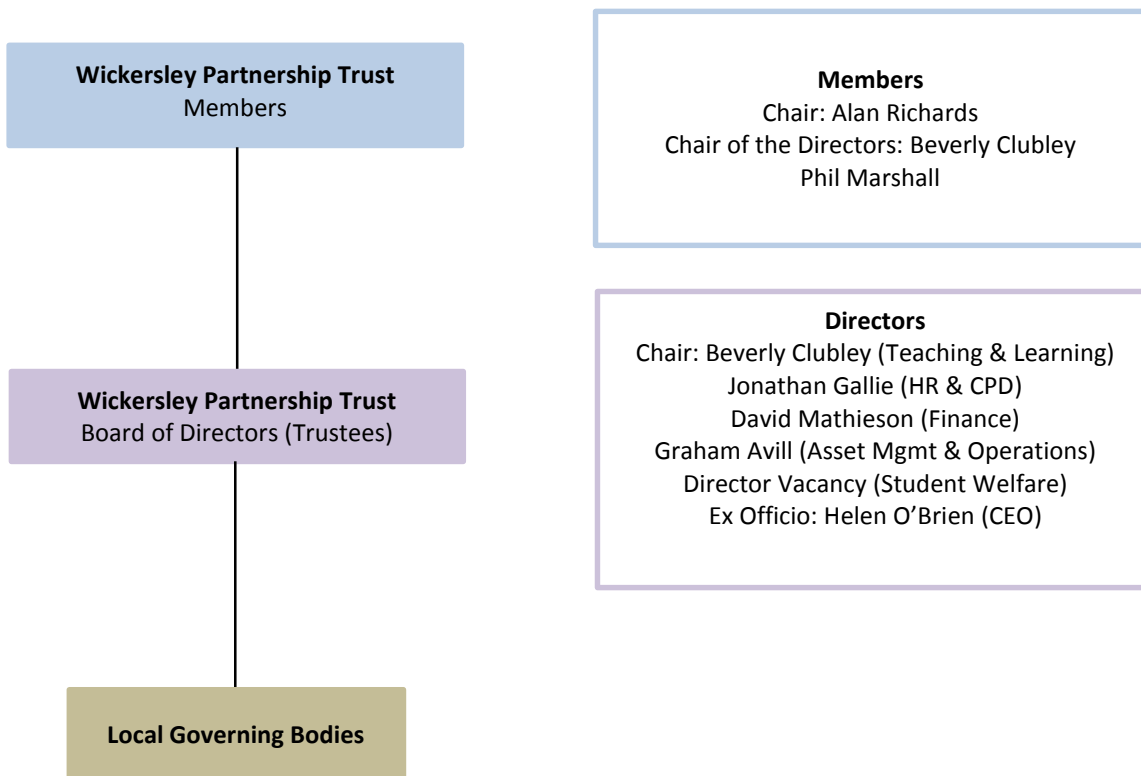
Wickersley Partnership Trust

Governance framework

1. Governance Structure



2. Members and Directors



2.1 Role of Members

The Members role is a new tier of governance that a maintained school does not have. Members are the equivalent of shareholders in a commercial company and have overall “control”.

The members of the academy trust have a different status from the directors. The members are the subscribers to the trust’s memorandum of association, and any other individuals permitted to become members under its articles of association. Members have an overview of the governance arrangements of the trust and have the power to appoint trustees and remove these trustees. Members approve the annual accounts and Directors' annual report each year at the Annual General Meeting.

Members can amend the articles and may do so to support stronger governance arrangements.

2.2 Role of Directors (Trustees)

The Academy Trust's Directors have ultimate responsibility for the day to day management of the Trust’s Academies. The Directors set the overall strategic direction for the Academies collectively and are the people responsible under the academy trust’s articles of association for controlling its management and administration. They have responsibility for directing its affairs, and for ensuring that it is solvent, well-run, and delivering the trust’s charitable outcomes for the benefit of the public.

Although the Directors are directors of the company in company law terms, they are also charity trustees, as the Academy Trust is charitable in law.

To perform their role effectively, the Board of Directors must have a real understanding of the Trust's structure, its aims and how it means to meet those aims. The recruitment and development of Directors is critical to good governance. The Trust aims to have an appropriately skilled and knowledgeable Board of Directors that collectively are able to provide strategic leadership and challenge Trust performance in the following key areas as a minimum:

- Student Welfare
- Teaching and Learning Pedagogic Performance
- Human resources and staff professional development
- Asset management and operations
- Financial management

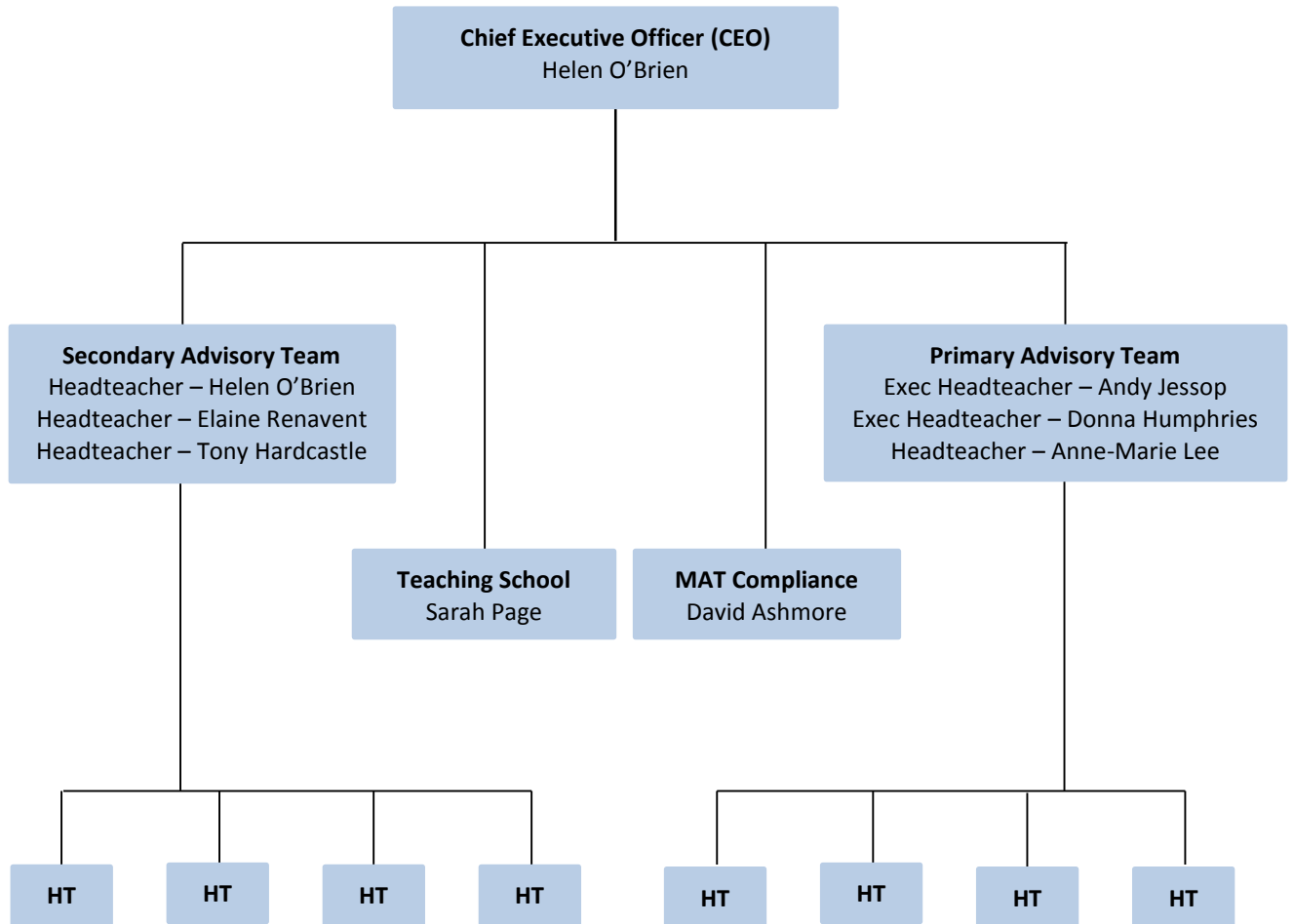
The Directors have appointed either single or joint Local Governing Bodies (committees) for each academy within the Trust to which duties are delegated. Day to day operational matters are delegated to the Headteacher and through the Headteacher to the senior leadership team of each Academy.

The Trust has appointed a Chief Executive Officer who is an ex-officio director of the Academy Trust.

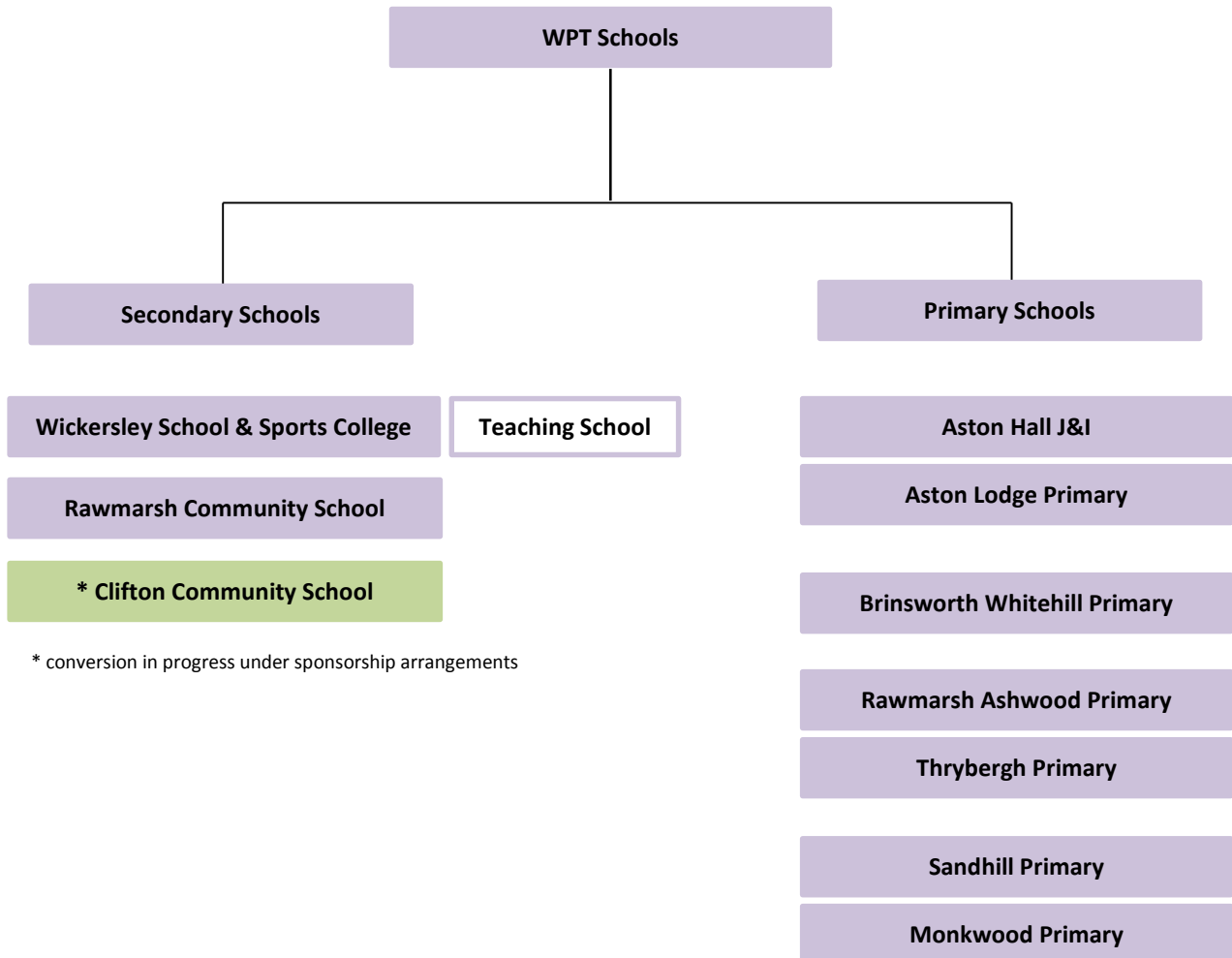
2.3 Local Governing Bodies

The Directors consider schools to be an integral part of their local communities and for community links to be fully embedded into the life and work of the school. Local Governing Body's (LGB) are appointed for each Academy within the Trust and are accountable to the Trust's Board of Directors. The LGB's for each academy essentially fulfil the same role as the Governing Body of a maintained school. Their focus is the core business of their pupils' attainment and progress.

3. MAT Professional Leadership



4. WPT schools



* conversion in progress under sponsorship arrangements